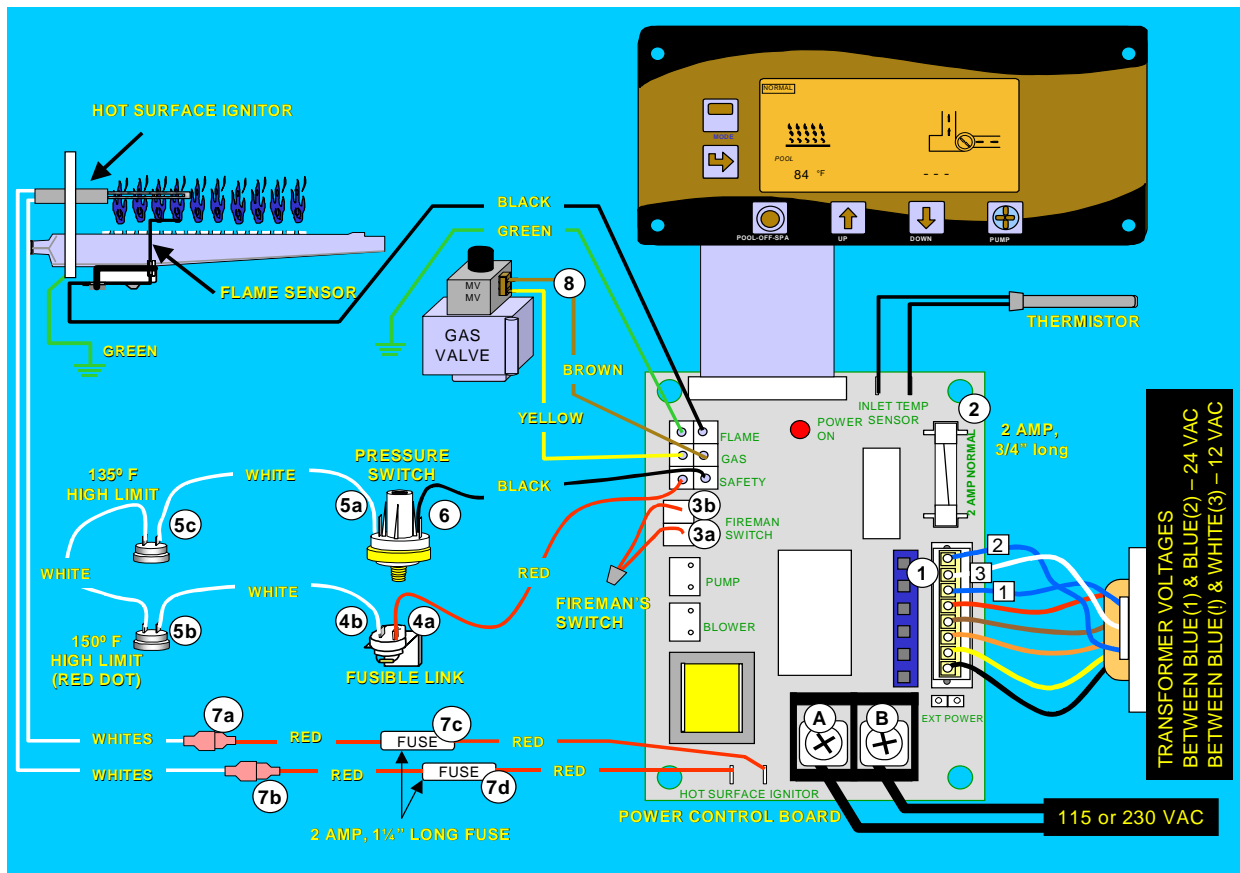
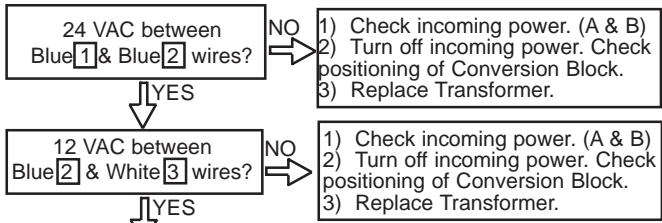


LITE 2 LJ TROUBLESHOOTING



For Thermostat troubleshooting refer to the installation manual.

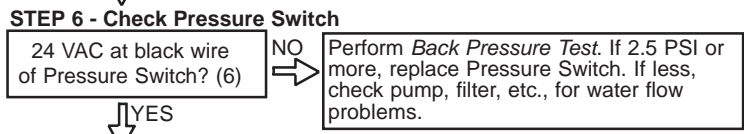
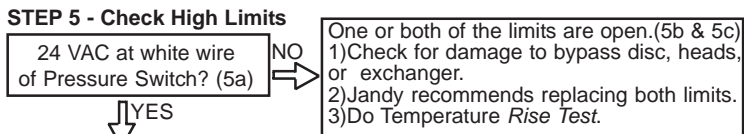
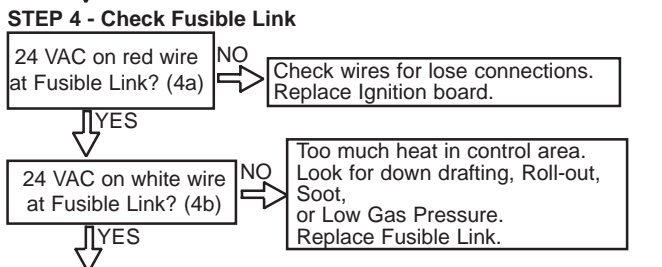
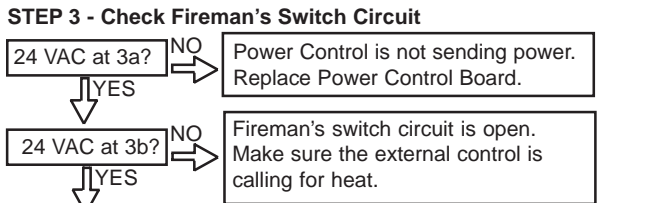
STEP 1 - Check Transformer - Set meter to ACV above 240



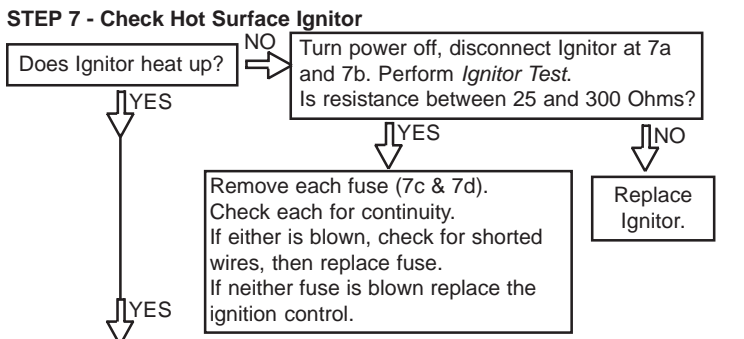
STEP 2 - Check Fuse (insert common probe in with blue 1 wire, touch other probe to far end of fuse)



For the next tests insert and leave the common probe in with the blue(2) wire.



For Ignitor Test, remove common probe from blue(2) wire.



For Gas Valve test reinsert the common probe in with the blue(2) wire.

